

**planters for exterior & interior spaces**



**Galvanised  
Stainless Steel  
Cor-Ten  
Powder Coated  
Aluminium  
Zinc  
Steel  
Aluzinc**



**BSPOKEdesign**



## Contents

1. Galvanised Planters	3
2. Hot Dip Galvanised Planters	4
3. Aluzinc Planters	4
4. Zintec Powder Coated Planters	4
5. Powder Coated Planters	5
6. Stainless Steel Planters	6
7. CorTen Planters	7
8. Aluminium Planters	8
9. Zinc Planters	8
10. Mild Steel Industrial Planters	8
11. Large & Modular Planters	9
12. Barrier Troughs	9
13. Window Box & Brackets	10
14. Irrigation	11
15. Materials Summary	11
16. Container Specification & Structure	12



## Welcome

BSPOKE Design is the leading manufacturers of quality interior & exterior containers for commercial and residential displays. We offer many services from design to the complete solution and have the facilities to produce metal planters of any size. We specialise in fabrication from a variety of metal materials, these include galvanised steel, stainless steel, powder coated steel, Zintec, aluminium and CorTen.

Our planters are the ideal way to give your space that stylish designer look and feel.

Some of our clients



Planter products for Specifiers, Architects, Interior Designers, Landscape Contractors and Businesses  
Hotels – Restaurants – Leisure – Education – Resorts – Refurbishments – Commercial – Healthcare



# Seamed Galvanised Planters



Our range of galvanised planters, are designed to be used for gardens, roof terraces and exterior landscaping projects. As sheet metal is versatile and can be cut to any size, galvanised containers can be used for small or large planting areas.

Galvanised steel is supplied in bright or spangled (Etched) pre-galvanised sheet steel. Once in situ, the container will dull down over time to form an aged silver patina that provides an effective industrial look to the containers.



v Tall tapered  
seamed containers



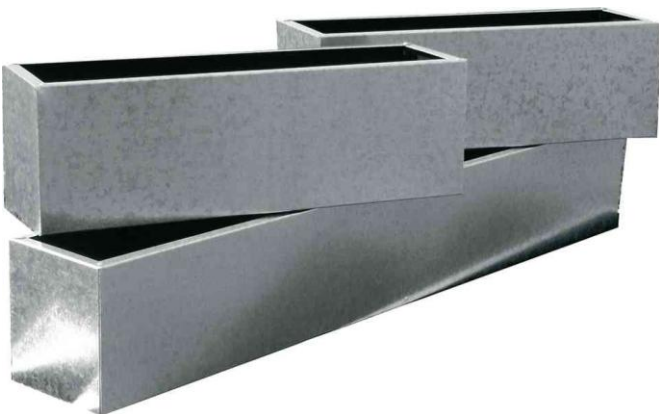
The planters are inclusive of drainage holes. We recommend a polymer liner for the container as this will prevent internal corrosion and if this is required, we are able to install this on supply.

EASY TO CLEAN & LOW MAINTENANCE

INDUSTRIAL LOOK WITH SILVER AGED PATINA OVER TIME

ECO FRIENDLY PRODUCTION

COST EFFECTIVE

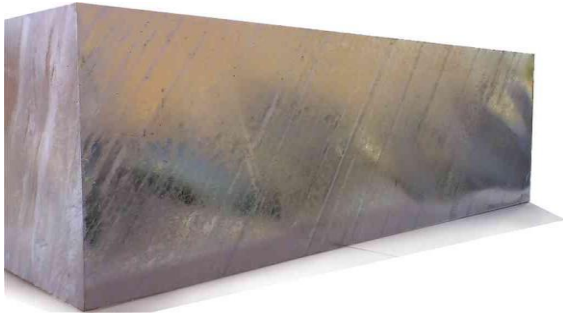


v Seamed Container with inset channel on the base gives the illusion of a floating container



\* Standard seamed containers with optional polymer liner for internal protection from corrosion

# Hot Dip Galvanised



Hot dip galvanised containers are highly durable, tough and provide a unique urban industrial look. Our hot dip containers are dearer than pre-galvanised containers as these containers are manufactured from mild steel and then undergo a hot-dip process where the container is submerged in a molten zinc bath providing superior corrosion resistance. Once it is hot dip galvanised, a shiny bright metallic finish with variations of shimmer is produced. There is slight distortion in the material due to the heat process, however this adds to the industrial character of the container.

Please be aware that while a great or matte appearance may occur, this matte appearance does not reduce the long term atmospheric corrosion protection of the steel.

SEAMLESS INDUSTRIAL APPEARANCE

NO MAINTENANCE REQUIRED

TOUGH & RESILIENT

## Aluzinc Steel

Aluzinc is an aluminium-zinc coated steel used for cladding buildings and has excellent weathering properties. It can be formed into many shapes and sizes.

Aluzinc does not dull down like ordinary galvanised steel and will not water mark. The planters are produced in the same manner as galvanised containers and feature a planter with seams, a return lip and drainage holes.



^ Aluzinc Material



^ Galvanised Material

CLEAN INDUSTRIAL LOOK

EXCELLENT CORROSION RESISTANCE

COST EFFECTIVE

## Zintec steel powder coated



Zintec steel is the perfect choice for the powder coated planter ensuring a long life and an excellent finish. Zintec is a great material to use if you require a cost-effective fully welded seamless powder coated container. Electro-Zinc Coated Steel sheet or Zintec is a rolled material that has been electrolytically coated with a thin layer of zinc. We can manufacture almost any size and customise the planters to your requirements.

The powder coating process allows your planter to be finished in almost any colour. Our powders are selected from the RAL or BS colour system giving you a choice of over 250 colours. Powder-coated planters can also be finished in satin, matte or gloss.

Colours are subject to availability and minimum order requirements.

FULLY WELDED SEAMLESS CONTAINERS

TOUGH & DURABLE

A RANGE OF COLOURS

# Galvanised Powder Coated Planters



Our standard range is manufactured from pre-galvanised sheet steel using

lock and form fabrication and this produces a seamed container with a return lip. The container is locked with rivets on the top lip; however we can replace the rivets with a weld for a smooth return lip.

Our polyester powder coating is designed for external use and the most characteristic feature of polyester powder coating is the very good colour and gloss retention in outdoor exposure, where UV stability and weather resistance is required. It is hard, and has very good abrasion resistant properties. Our standard range is powder coated externally, however we can also powder coat the container internally for added protection from internal corrosion. We are also able to powder coat stainless steel, Zintec, Aluzinc and aluminium.

VAST RANGE OF COLOURS ARE FINISHES

A RANGE OF SIZES AND SHAPES

DURABLE AND LONG LASTING

## Metallic Architectural Coatings



\*Clear lacquer is recommended on selected finishes. Other antique and hammered finishes are available on request

1. Hammered Gold
2. Antique Bronze
3. Antique Silver
4. Coarse Silver 02
5. Fine Silver 03
6. Gun Metal Steel 41
7. Satin Grey RAL 9007
8. Silver metallic
9. Antique Copper

## RAL & BS Colours



Please contact us for further details should you require a colour match not within our standard RAL Colour range.



# Stainless Steel Planters



^ Brushed Grain Finish



^ Polished Finish

Stainless steel is now a popular choice of material for the residential and commercial space. It is one of the simplest and most attractive ways to create a contemporary internal or external design statement. Its sleek elegant exterior is combined with a lasting toughness and durability.

We supply planters of the highest quality UK stainless steel, which can be used all year in both interior and exterior surroundings. We offer brushed or polished finishes in a choice of circular, square, rectangular and tall container shapes.

The longevity of stainless steel is as a result of it being a composition alloy which has a natural resistance to corrosion. It is typically 70% recycled and 100% recyclable. All of our stainless steel planters are available in a brushed grain, a highly reflective polished or mirror polished finish.

BSPOKE design uses 304 stainless steel in our normal planter production. In coastal or urban areas with high levels of salt, we recommend the use of 316 grade. Stainless steel 430 is suitable for interior use or as a cost effective option.

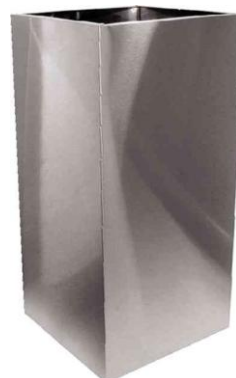
We recommend the use of a polymer liner inside the container to prevent internal corrosion from the metal reacting with the chemicals in the compost and we can install this for you. For added protection, we are also able to provide a lacquer on the surface to prevent staining.

EXCELLENT CORROSION RESISTANCE  
MODERN & TIMELESS LOOK  
RECYCLABLE MATERIAL



^ Welded seamless container with internal polymer liner

v Brushed seamed tall container

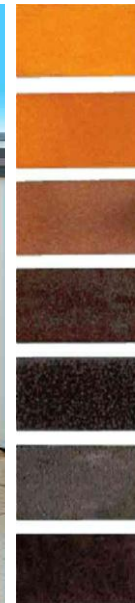


^ Bespoke custom container

# Cor-Ten® Steel Planters



^ Large Cor-Ten container with plinth for trees and



Orange patina  
in early stages  
of rust leads to  
a dark brown  
tone

v Side only containers

The Naturally aged rust look of Cor-Ten steel makes it one of the newly popular materials for outdoor planters. Cor-Ten steel is a solution for highly durable architectural planters, for both commercial and domestic use.

Cor-Ten is a copper chromium alloy steel and when it is left in the atmosphere, rust occurs first in the same way as ordinary steel, but a dense protective rust forms on the surface of the steel due to the action of the alloy element over time inhibiting the later development of further rust.

Cor-Ten exhibits a yellowish appearance in the initial stage of rust and the colour gradually changes to brown. Then as it sits in its surrounding environment the colour changes to a sedate blackish brown in one to two years.



## NATURAL APPEARANCE & WEATHERING PROPERTIES

### NO MAINTENANCE

### RECYCLABLE MATERIAL

We manufacture in a standard thickness of 1.5mm, however we can produce in 3mm and 6mm for container in public areas. A cost-effective seamed container is also available.



^ Cor-Ten container undergoing rusting in our

Cor-Ten requires no maintenance, however some designer have used a light coating of oil to slightly alter the look. This would need to be reapplied every year. As with real rust, it will leach especially over the first year and this can stain. The patina of age will develop over time and this also provides additional strength over time.

We can manufacture custom sizes to suit your needs and include laser cut patterns, rounded forms and raised planters as well as manufacture large sectional containers to form large planting beds. Large containers can also be manufactured with sides only to reduce weight and cost.



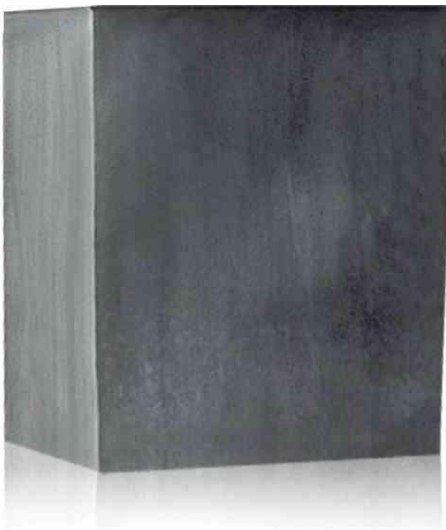
# Aluminium Planters

Aluminium trough – L3000 x D300 x H180 mm

Aluminium planters can be manufactured in any size and are suitable for indoor and outdoor use. They offer the same clean and modern appearance as stainless steel at a more competitive price.

Aluminium planters have excellent rust proof properties and can be coated in a hard wearing lacquer for extra protection. The planters are produced with no visible seams and can be supplied in a brushed or a polished finish.

## Zinc Planters



Zinc is a perfect complement to either contemporary or traditional architecture. Naturally zinc is grey but once it is exposed to the elements, it becomes weathered and starts changing from the metal grey to a beautiful grey-white that resembles old lead, although variations in colour can occur depending on the outdoor climate. We also offer a pre-weathered version with a hard brushed finish in dark grey.

Their lighter weight makes them ideal for roof tops and balconies as well as larger sizes of several styles can be made to order with the zinc material being a clad layer with an integrated supporting structure. As a soft material, slight dents and scratches can occur during usage, however this adds to the aged look of zinc.

Zinc has extremely long service life and the surface of the zinc sheet naturally oxidises to thin stable layer that does not rust and require any maintenance.

## Industrial mild steel welded planters

Our mild steel planters provide the ultimate industrial look. The container is fully welded and the seams are finished on the edge. The containers are finished in this manner and this provides a shiny edge to a matt steel material.



The containers are hot baked inside and outside with a clear matt lacquer which makes them suitable for outdoor use.

**DISTINCTIVE INDUSTRIAL LOOK**

**CAN BE FULLY WELDED OR TACK WELDED**

**TOUGH**





# Large & Modular Planters



^ Large powder coated planter with a galvanised plinth

BSPOKE design are able to manufacture large containers for large areas of planting bed which have a mix of trees and shrubs. This can be manufactured in a single piece or can be made up by lining sectional containers which are assembled on site. This is recommended for containers larger than 2 x 2m square or long section troughs. With weight being an important factor, the containers must be strong enough to contain the soil, water and plants.

The containers can include braces internally and a strong supporting base. We are also able to raise the containers to provide forklift access or set the containers on a plinth. On

rooftops, weight is a consideration therefore high density polystyrene blocks can be used in the planting beds.



^ Large 3m containers ready to go

GREAT LARGE AREAS OF GREEN SPACE

CUSTOMISED SOLUTION

GREAT FOR ROOF TOP GARDENS

A RANGE OF CLAD MATERIALS

## Barrier Troughs

Our range of barrier troughs can be used to add privacy without the need to build a permanent structure. These containers can be manufactured from any metal material and castors can be placed underneath to move the containers.



# Window Boxes



Our window boxes are also great for commercial projects as they are durable and robust and provide a striking impact to any window.

We specialise in the manufacture of custom made metal window boxes to suit any balcony or window ledge. Our standard range is manufactured from galvanised steel and can be powder coated to your desired colour.

## Brackets

We supply an extensive range of adjustable brackets for our window boxes. This fits most windows boxes and can be adjusted to fit balcony rails or walls.



### Adjustable Window Box Bracket

Wall mounted with adjustable bar. Adjustable trough width 143mm – 213mm. Support bar available for heavier boxes

### Adjustable Balcony Bracket

To fit balconies, walls, fences, railings and trellis. Adjustable fixing position 25mm – 128mm. Adjustable trough width 134mm – 209mm.

### Extra Wide Bracket

To fit wide balconies and wide walls. Adjustable fixing position 136mm – 273mm. Adjustable trough width 143mm – 213mm.

### Stirrup Bracket

Various sizes available



^ Wall Mounted

^ Support Bar

^ Balcony Bracket

^ Wide Wall Bracket

^ Stirrup Bracket



# Irrigation



Mona systems ensure that water and nutrients are delivered in the right quantity directly to the root of the plant. They also help reduce your liquid fertilizer usage by up to 75%. We supply a range of sizes for different containers from small pots to large troughs. The reservoir works on the principal of capillary action with water being drawn into the soil around the roots.

For larger projects, MONA Link Systems provide easy subterranean irrigation. Ideal for shallow planting environments, link systems can handle curves, odd shaped beds and gradients.

With the help of a flexible connector/fill tubes, plant medium capillaries and level indicator wands a well placed link system takes the guess work out of the most complex landscaping projects.

## Benefits of using a reservoir

The reservoir saves time and money and guarantees an optimal growth environment for your plants.

- Saves water
- Reduce maintenance
- Keeps plants watered while you are away
- Bigger, healthier plants
- Prevent water stains on hard landscaping
- Reduce fertiliser usage



## Material Summary

Material	Pre-Galvanised Steel	Aluzinc	Pre-Galvanised Powder Coated
Budget	Low	Low	Medium
Resistance to Corrosion*	Good corrosion resistance. Required internal liner. Hot baked lacquer can extend life	Excellent corrosion resistance. Recommended internal liver.	Excellent corrosion resistance. Zinc premiered prior to powder coating. Recommended internal liner.
Durability	Tough	Tough	Tough. NB: Coating can chip
Maintenance*	Minimal	None	Minimal
Appearance	Industrial	Industrial	Minimalist
Ageing Properties	Will dull to form silver patina	N/A	N/A
Construction	Folded Seams	Folded Seams	Folded Seams
Material	Zintec Powder Coated	Corten Planters	Stainless Steel
Budget	Medium	Medium-High	High
Resistance to Corrosion*	Good resistance to corrosion. Powder coated inside for added protection.	Excellent corrosion resistance.	Excellent resistance for 304. 316 for coastal regions. 430 suitable for indoor use. Recommended internal liner.
Durability	Tough. NB: Coating can chip	Tough	Extremely tough
Maintenance*	Minimal	None	Minimal
Appearance	Minimalist	Natural	Minimalist
Ageing Properties	N/A	Rust Patina	N/A
Construction	Folded Seams or welded	Folded Seams or welded	Folded Seams or Welded
Material	Hot Dip Galvanised	Zinc Planters	Copper/Brass Planters
Budget	High	High	Very High
Resistance to Corrosion*	Excellent Corrosion Resistance	Excellent Corrosion Resistance	Excellent Corrosion Resistance
Durability	Extremely Tough	Soft. Large containers require internal container	Medium
Maintenance*	None	None	None
Appearance	Industrial	Natural/Aged	Natural/Aged
Ageing Properties	Will dull to form silver patina	Lead grey/Dark grey patina	Weathered finishes
Construction	Welded	Folded Seams	Folded seams or welded

## Standard Seamed Container

Our standard containers are manufactured using a lock & form process which produces a solid container from sheet metal. It features seams where the metal is folded and locking into place and riveted at the top to secure the panels and maintain the structural integrity. The thickness of the metal is dependent on the size of the container. This container features a 20mm return lip and drainage holes. We provide a number of options to improve the aesthetic appearance of the container and provide additional features for different applications.



## Additional features

**Custom sizes & Shapes** – We are able to manufacture any size or shape

**External surface finishing** – We provide a range of powder coating finishes for our containers including metallics. Containers can also be hot baked with a clear lacquer for additional protection.

**Fully welded containers** – For premium quality, we are able to manufacture seamless fully welded containers. We also offer part folded and welded containers.

**Drainage Holes** – This is drilled into the base of the container and allows water to drain at the base.

**Internal bracing or structural support** – This is required to prevent bowing if the containers are extra long. In some cases this is not essential if the material has a substantial gauge.

**Channel supported raised base** – Ideal for forklift access or if the container needs to be raised from the ground.

**Polymer lined or sealed** – All containers can be polymer lined to prevent internal corrosion or sealed with an exterior waterproof sealant to make the containers water tight.

**Raise Plinth** – An aesthetic feature but also protects the metal panel from direct contact with the ground. Suitable for stainless steel or powder coated planters.

**Flat Base** – This is recommended if the containers need to sit on a wall.

**Feet or adjustable feet** – Feet can be placed in the corner of the containers which can be adjusted on uneven ground. Only applicable on selected containers.

**Castors** – Containers are moveable with castors. These can be mounted on a flat base or recessed base.

**Galvanised Liner** – An internal container with handles or a lifting bracket for fast plant change.

**Corner Lifting Bracket** – The feature is useful if the containers need to be lifted to provide off site maintenance. This is normally integrated inside the container or the galvanised liner.

**Internal root ball anchors** – These are located at the base or near the top to help stabilise the tree.

**LED Lighting** – We can supply basic plinth lighting, plant lighting, up lighting and down lighting. The LED lighting will require a mains power supply.

**Irrigation systems** – Mona watering system consisting of reservoir tanks and linking pipes.

**Insulation** – Recommended for metal planters to prevent the roots from overheating. HD Polystyrene is lined internally.





# Product Information

## Our galvanised containers



^ Seamed container with recessed raised base



^ Underside 10mm raised base



^ Large trough with internal ply bracing



^ Underside 10mm recess base with support



^ Seamed container with flat base



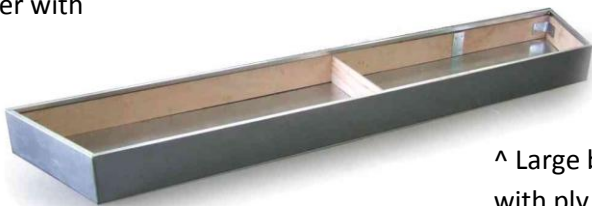
^ Underside of container with flat base



^ Channel supported base container with forklift access



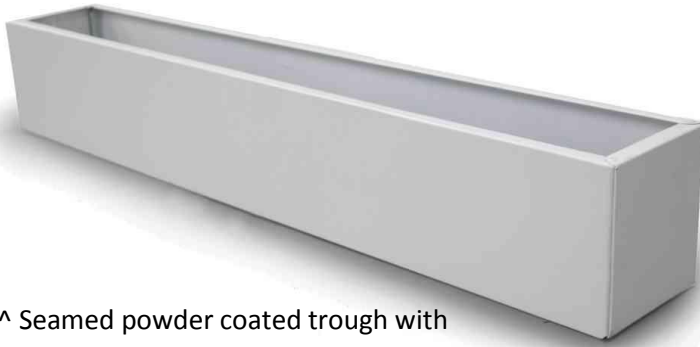
^ Hot dip galvanised seamless containers



^ Large bespoke 2.5m herb container with ply liner

# Product Information

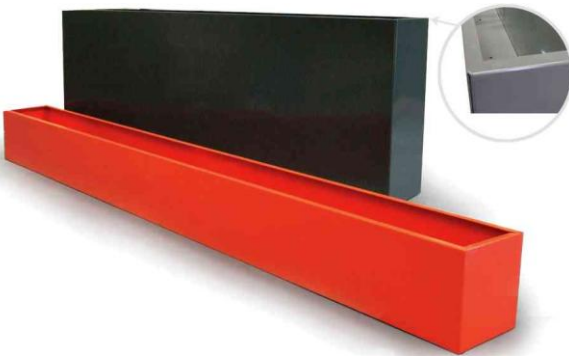
## Our powder coated containers



^ Seamed powder coated trough with riveted top lip



^ Seamless fully welded powder coated planter



^ Grey seamed high trough with welded lip & orange 2.5m window box



^ Curved containers & bespoke shapes



^ Powder coated trough with forklift access



^ Powder coated trough with recessed castors



^ Powder coated high trough with raised base



^ Bespoke planters with lighting features



## Product Information

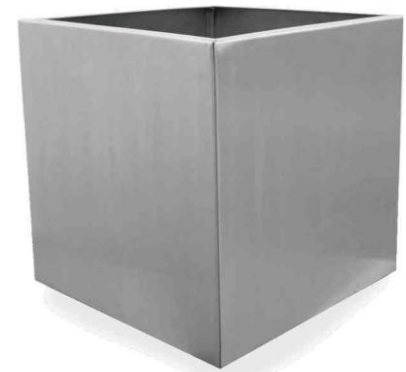
### Our stainless steel containers



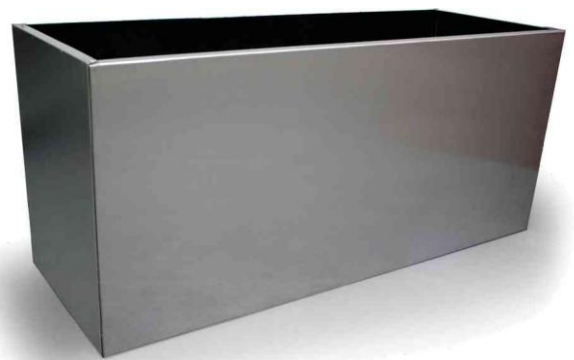
^ Extra large seamless 1.6m fully welded stainless steel cube container with polished round container



^ Containers with brackets for rails and walls



^ Seamed stainless steel container with 10mm recess base

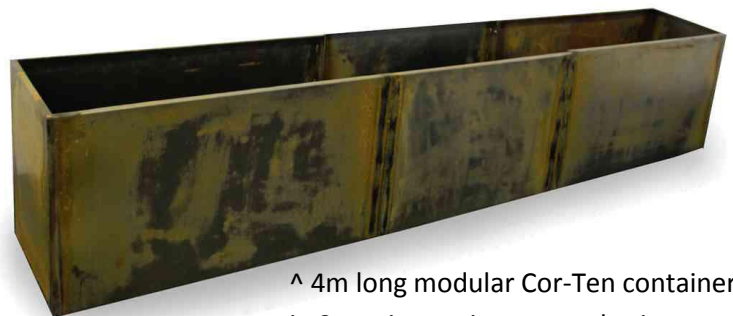


^ Folded stainless steel barrier trough

### Our Cor-Ten steel containers



^ Tapered Cor-Ten weathered planter



^ 4m long modular Cor-Ten container in 3 sections prior to weathering



^ Fully welded Cor-Ten containers in weathering process

BSPOKEdesign  
Unit 9  
Ledsam Street  
Birmingham B16 8DW

0121 374 2918  
enquiries@bspokedesign.co.uk  
www.bspokedesign.co.uk